

Hughes Technical Training



Welcome Packet

2026

TABLE OF CONTENTS

<u>SECTION</u>	<u>PAGE</u>
1.0 TECHNICAL TRAINING OVERVIEW	3
2.0 DRIVING DIRECTIONS TO HUGHES NETWORK SYSTEMS, MD	4
3.0 LOCAL HOTEL INFORMATION	5
4.0 LOCAL AREA INFO: BUS STOPS	6
5.0 LOCAL AREA INFO: RESTAURANTS	7

1.0 TECHNICAL TRAINING OVERVIEW

Hughes technical training courses take place at the **Hughes EXM** building. The address is **19710 Observation Drive, Germantown, MD 20876**. It is right beside the Hughes Headquarter.

On the morning that your class is scheduled to begin, check in at the reception desk at the EXM building by 8:45 a.m. to obtain a badge and receive directions to the classroom for your training course. The class hours are normally from 9:00 a.m. to 12 p.m. and 1:30 p.m. to 4:30 p.m.

The free WiFi Internet access are provided in the training area.

There are some restaurants nearby within 15-20 minutes walking distance. We encourage you to rent a car during your stay in Maryland.

We look forward to providing you with world-class training at our state-of-the-art teaching facility.

2.0 DRIVING DIRECTIONS TO HUGHES NETWORK SYSTEMS, MD

301.428.5500

STEP 1
Driving directions from airports to northbound I-270

FROM CAPITAL BELTWAY (RT. 495):
Follow Interstate 270 North (toward Frederick) for about 15 miles...

FROM DULLES INTERNATIONAL AIRPORT:
Take the Dulles access road (the only exit from the airport) and exit to Route 495 (Capital Beltway) toward Baltimore. Follow 495 to Interstate 270 North (toward Frederick). Continue on 270 for approximately 15 miles...

FROM REAGAN NATIONAL AIRPORT:
Exit from the airport to the George Washington Memorial Parkway (GW Parkway). Follow the GW Parkway toward Maryland, to Route 495. Take 495 to Interstate 270 North (toward Frederick). Continue on 270 for approximately 15 miles...

FROM BALTIMORE WASHINGTON INTERNATIONAL AIRPORT (BWI):
Exit from airport onto Baltimore/Washington Parkway toward Washington. Proceed to Capital Beltway (495). Take 495 westbound (toward Rockville) and exit at Route 270 North (about 10 miles). Continue on 270, toward Frederick, for approximately 15 miles...

STEP 2

TO HUGHES CORPORATE HEADQUARTERS:
11717 EXPLORATION LANE, GERMANTOWN, MD 20876

From 270 take Exit 13A (Middlebrook Road East). As soon as you come off the ramp onto Middlebrook Road, merge into the far left lane and turn left at the first traffic light onto Observation Drive, turn left onto Exploration Lane. Follow road to building. [Note: There is no direct exit from 270 southbound from Frederick. You must exit onto Rt. 118 East and follow 355 South to Middlebrook Road as shown on map.]

TO HUGHES LAKEFOREST FACILITY (LFF):
100 LAKEFOREST BLVD., GAITHERSBURG, MD 20877

From 270 North take Exit 11, Montgomery Village Ave. Merge onto Montgomery Village Ave. from ramp, cross Route 355 (Frederick Ave.), and at next light, Russell Ave., turn right. Make first right into the parking lot at LFF.

TO HUGHES SHADY GROVE FACILITIES (SGZ):
16060 INDUSTRIAL DR., GAITHERSBURG, MD 20877

From 270 take 370 East to Shady Grove Metro Exit 9A. Take the first exit, 355 South/Shady Grove Road. At the end of the ramp turn right at the light onto Shady Grove Road. Turn right onto Gaither Road at the second light. (These will be on the left before the 370)

3.0 LOCAL HOTEL INFORMATION

Below are the Hughes preferred hotels. Call for Echostar/Hughes preferred rate or book via the booking link when available.

- **Spark by Hilton Germantown Washington DC North**
20260 Goldenrod Ln, Germantown, MD 20876
0.9 mile from Hughes EXM

[Spark by Hilton Germantown Booking Link](#)

- **Fairfield Inn and Suites Germantown Gaithersburg**
20025 Century Blvd, Germantown, MD 20874
2.0 mile from Hughes EXM

[Fairfield Inn and Suites Germantown](#)

- **Holiday Inn – Gaithersburg**
Two Montgomery Village Ave, Gaithersburg, MD 20879
3.6 mile from Hughes EXM

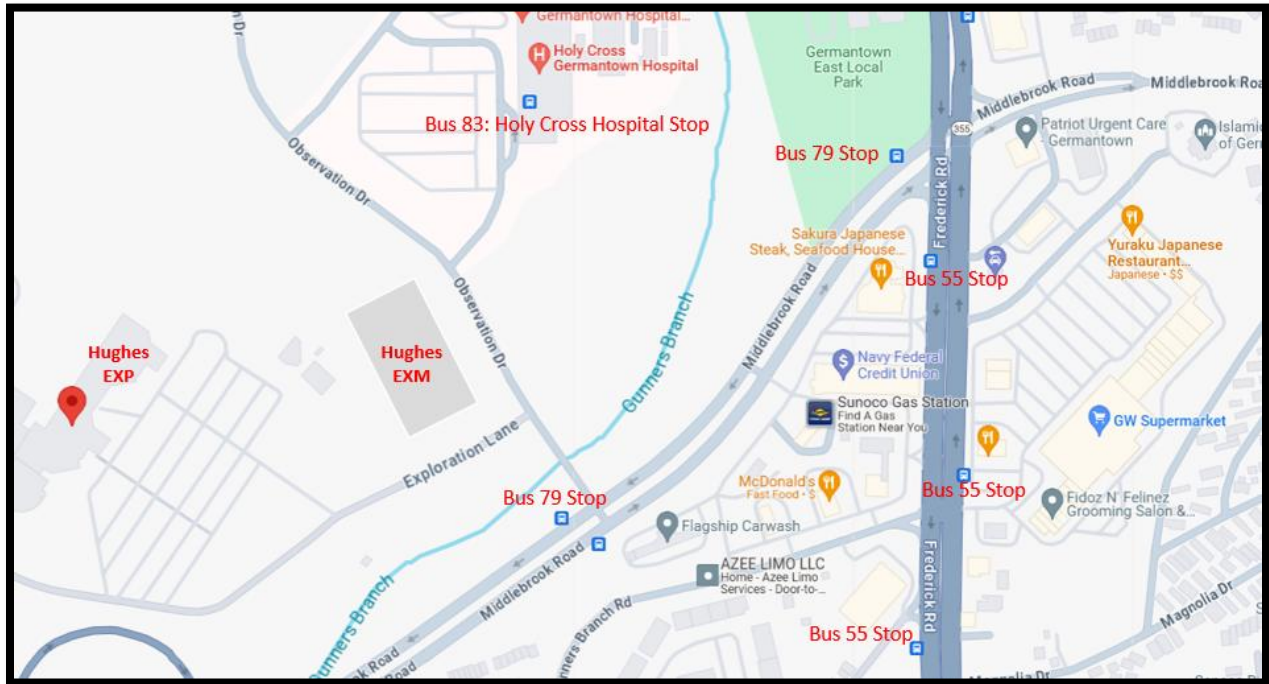
- **Homewood Suites by Hilton Gaithersburg/ Washington, DC North,**
805 Russell Ave, Gaithersburg, MD 20879
3.0 mile from Hughes EXM

- **DoubleTree by Hilton Washington DC North Gaithersburg**
620 Perry Pkwy, Gaithersburg, MD 20877
4.0 mile from Hughes EXM

- **TownePlace Suites by Marriott Gaithersburg**
212 Perry Pkwy, Gaithersburg, MD 20877
4.4 mile from Hughes EXM

- **Comfort Inn at Shady Grove -Gaithersburg/Rockville**
16216 Frederick Road, Gaithersburg, MD 20877
6.7 mile from Hughes EXM; Limited shuttle service; Close to Shady Grove Metro Station

4.0 LOCAL AREA INFO: BUS STOPS

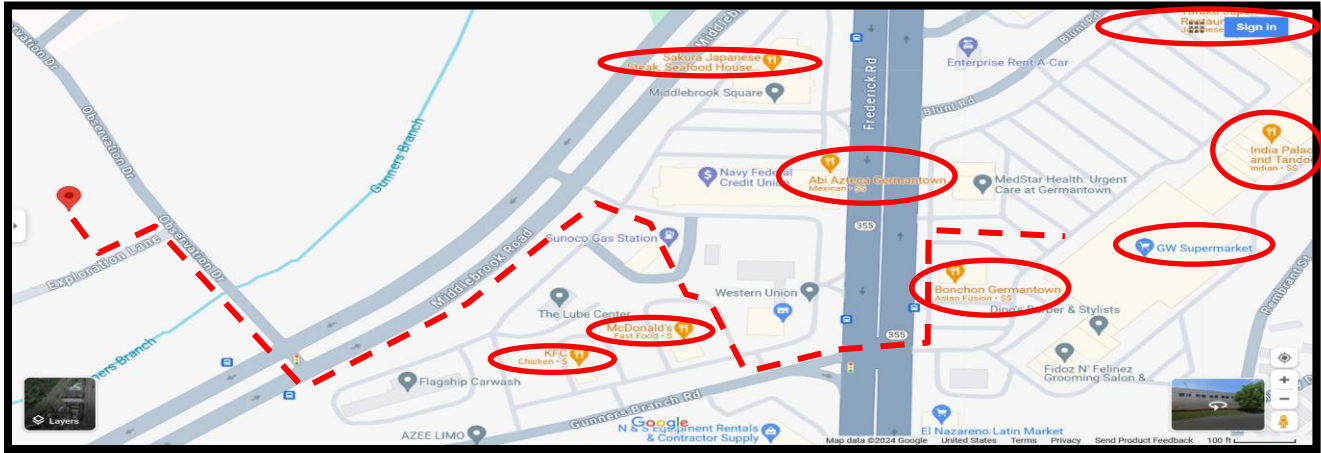


Please check www.rideonbus.com for bus route and timetable. You can download the free Ride On Trip Planner App from Apple Store or Google Play to your cell phone to plan your trip and track the bus activities.



55 Germantown Transit Center (GTC) – Montgomery College (Germantown) - Milestone Ctr – Lakeforest TC – Shady Grove – Rockville	Monday to Sunday, 15 to 35 minutes interval
83 Holy Cross Germantown – Milestone P&R Dorsey Mill Rd – Germantown Transit Center (GTC) MARC Station (Mon-Fri only)	Monday to Saturday, 35 to 45 minutes interval
79 Clarksburg Town Center – I-270 – I-370 – Shady Grove Metro Station	Monday to Friday, Peak hours only 40 to 50 minutes interval

5.0 LOCAL AREA INFO: RESTAURANTS



Note: suggested walking path -----

Name	Address
Sakura Japanese Steak, Seafood House & Sushi Bar	11502, 2709 Middlebrook Road, Germantown, MD 20876
KFC	19650 Gunners Branch Rd, Germantown, MD 20876
McDonald's	19660 Gunners Branch Rd, Germantown, MD 20876
Abi Azteca Germantown	11514 Middlebrook Road, Germantown, MD 20876
Bonchon Germantown	16567 S. Frederick Rd., Gaithersburg, MD
Food Court in GW Supermarket	19721 Frederick Rd, Germantown, MD 20876
Pho 81	19735 Frederick Rd, Germantown, MD 20876
Yuraku Japanese Restaurant - Germantown, MD	19773 Frederick Rd, Germantown, MD 20876