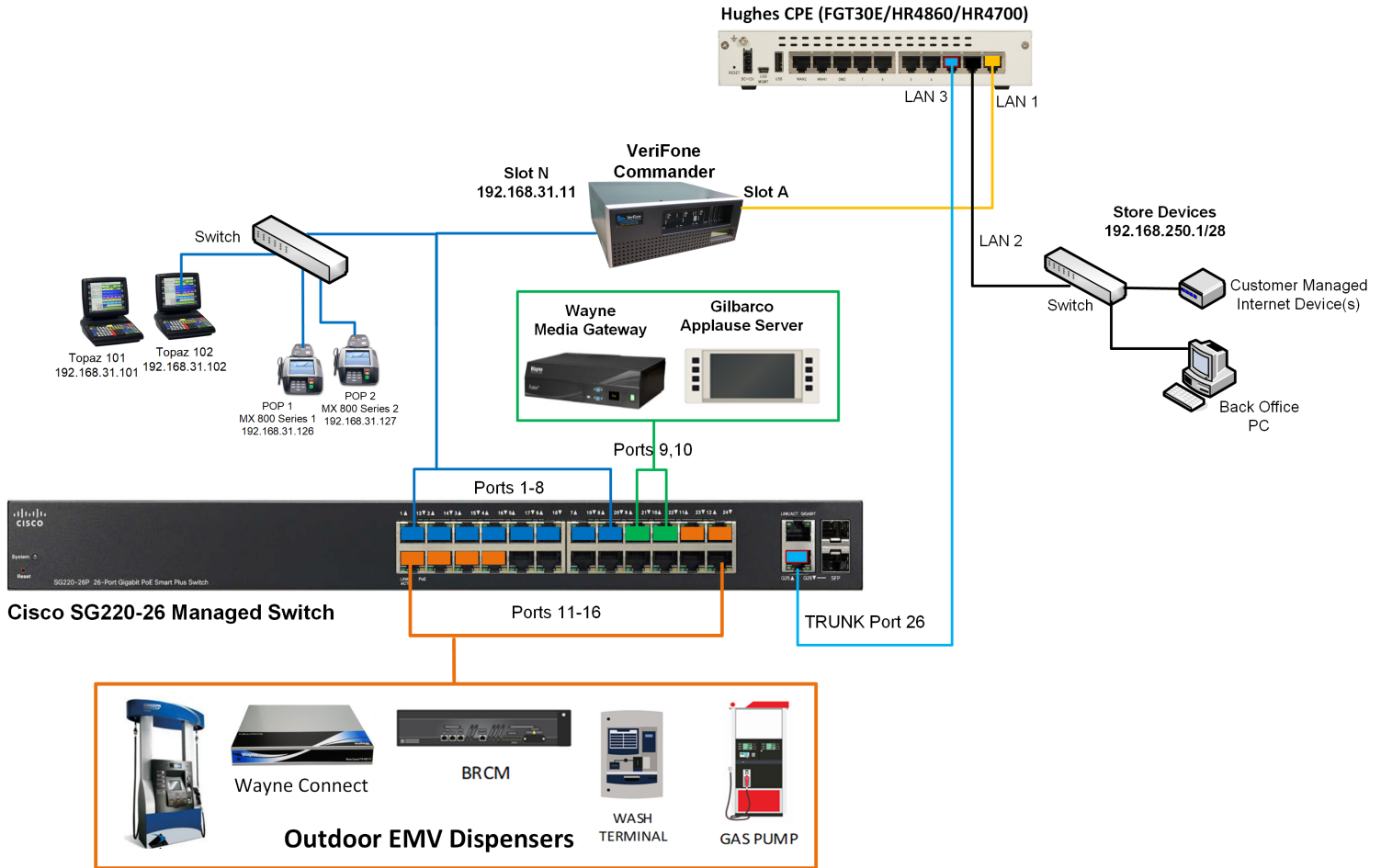


ExxonMobil Verifone MNSP Setup Guide



HughesONTM

HughesON is a suite of innovative, Cloud-ready network and digital media solutions designed for the unique needs of distributed enterprises in industries such as retail, hospitality, and retail petroleum.

Port Assignment on the Cisco SG220 Switch:

Ports/VLAN	Device	Description
Ports 1-8 (VLAN 30)	Verifone POS LAN	Subnet: 192.168.31.0/24 Commander Slot N: 192.168.31.11 Subnet Mask: 255.255.255.0 Default Gateway: 192.168.31.31
Port 9,10 (VLAN 60)	Wayne Media Server/ Applause Server	Wayne Media Server: 172.29.47.51 Subnet Mask: 255.255.255.0 Default Gateway: 172.29.47.1 Applause Server: 10.5.60.66 Subnet Mask: 255.255.255.0 Default Gateway: 10.5.60.1
Port 11-16 (VLAN 50)	Outdoor EMV Dispenser LAN	WAYNE DISPENSERS: Subnet: 172.29.46.0/24 Subnet Mask: 255.255.255.0 Default Gateway: 172.29.46.1 GILBARCO DISPENSERS: Subnet: 10.5.55.0/24 Subnet Mask: 255.255.255.0 Default Gateway: 10.5.55.1
Port 26 (Trunk Port)	Switch Trunk Port	Connects to Port 3 on the Hughes FortiGate (FGT30E/HR4860/HR4700) on site

Have a question regarding this installation guide? Call the numbers below:
Hughes Unified Broadband Customer Service 1-866-350-8786.
For POS Tech Installation Help, call 855-506-5268, Option 9.

For additional information, please call 1-888-440-7126
or visit business.hughes.com.