

**HUGHES EM
TERMINALS & ACCESSORIES
CATALOG**

<https://www.hughes.com/em>

April 2021

PROPRIETARY NOTICE

All rights reserved. This publication and its contents are proprietary to Hughes Network Systems, LLC. No part of this publication may be reproduced in any form or by any means without the written permission of Hughes Network Systems, LLC, 11717 Exploration Lane, Germantown, Maryland 20876.

HUGHES, HughesNet, IPoS, SPACEWAY, AIReach, Broadband Unbound, and Connect to the future are trademarks of Hughes Network Systems, LLC. All other trademarks are the property of their respective owners.

Copyright © 2021 Hughes Network Systems, LLC

45XX TERMINALS

Hughes 4500 Satellite Terminal

P/N: 3501310-0002

- S-band satellite operation with data rates up to 200 Kbps forward and 150 Kbps return
- Omnidirectional satellite antenna
- Integrated watchdog to ensure “always-on” network connectivity
- Supports remote terminal management
- Auto-on/auto-context activation
- Includes a 4500 Terminal and a Quick Start Guide
 - Accessories (cables, mounting hardware, etc.) sold separately



Hughes 4510 Satellite & Cellular Dual Mode Terminal

P/N: 3501310-0003

- S-band satellite operation with data rates up to 200 Kbps forward and 150 Kbps return
- Omnidirectional satellite antenna
- LTE CAT-1 operation with global coverage and embedded-SIM (eSIM) and physical SIM slot
- Integrated cellular antenna
- Integrated watchdog to ensure “always-on” network connectivity
- Supports remote terminal management
- Auto-on/auto-context activation
- Includes a 4510 Terminal and a Quick Start Guide
 - Accessories (cables, mounting hardware) sold separately

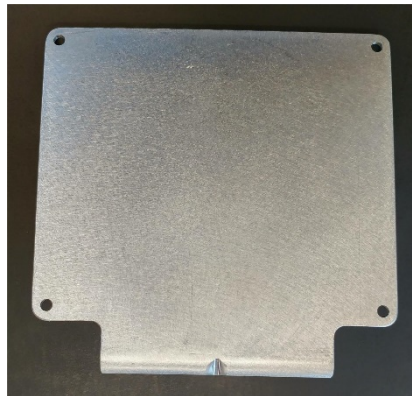


45XX MOUNTING HARDWARE

Fixed Mounting Bracket

P/N: 3501366-0001

- High quality corrosion resistant angle bracket for mounting the terminal to a vertical flat surface
- Pole mounting can be accomplished by adding U-clamps that can be sourced separately



Magnetic Mounting Kit

P/N: 3501365-0001

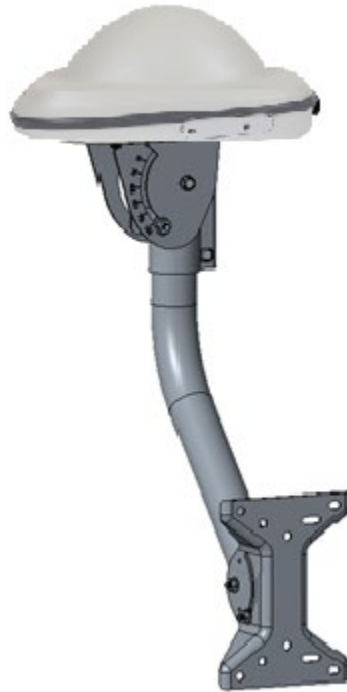
- Custom designed kit for mounting the terminal to a horizontal magnetic flat surface
- The kit contains all the parts needed to add magnetic mounting to the terminal



Pole Mount Kit

P/N: POLE-MOUNT-KIT

- Provides a convenient pole mount install for the 45xx
- Consists of all the pole mount hardware including the mounting plate, nuts, washers and lock washers needed to interface a pole mount assembly with the 45xx



45XX CABLES AND CONNECTORS

- Readymade cables for connecting the terminal to DC power and Ethernet data

Power & Data Cable, blunt wire, 5m

P/N: 3501314-0002

Power & Data Cable, blunt wire, 10m

P/N: 3501314-0003

- Blunt wire versions in differing lengths include the mating barrel connector to the terminal



Power & Data Cable, cig lighter plug & RJ45 socket, 5m

P/N: 3501314-0004

- The cigarette lighter plug and RJ45 version is ideal for temporary vehicular installs



RJ45 Wiring Block

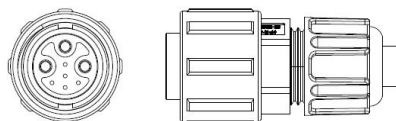
P/N: 9510250-0002

- RJ45 wiring block is useful to use with blunt wire cables



Mating Power & Data Connector, bare

P/N: 9509554-0001



Custom Power & Data Cable, 8.5mm OD, 100m

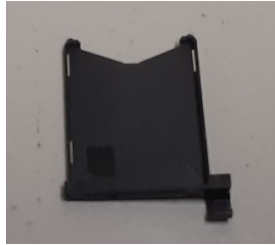
P/N: 9509897-0001

- Bulk cable and the solder ready barrel connector allow for custom cable installations

SIM Tray

P/N: 9510093-0001

- SIM tray for cellular insertable SIM with 4510 terminal



4200 TERMINAL

Hughes 4200 Portable Data Terminal Kit

P/N: 3501037-0002

- Battery operated Portable Terminal with integrated satellite GPS and WLAN antennas
- S-band satellite operation with data rates up to 290 Kbps forward and 256 Kbps return
- Simultaneous use of Ethernet and Wi-Fi for IP data
- Supports WPA and WPA-2 encryption over Wi-Fi
- Voice over IP
 - Supports one POTS port
 - Supports SIP clients over Wi-Fi and LAN
- Supports remote terminal management
- Kit includes a 4200 Terminal, AC/DC adapter with 2 power cables (UK and EU), rechargeable Li-ion battery, 5m Ethernet cable and a Quick Start Guide



4200 ACCESSORIES

DC/DC Adapter

P/N: 3500099-0003

- DC/DC car adapter



AC/DC Adapter

P/N: 3500411-0008

- Input 120 V-240 V, 50/60 Hz, 1.5 A
- Output: 19 V, 3.4 A
- Indoor use only

EU Power Cord

P/N: 3500637-0002

- Power Cord for AC/DC Adapter (EU plug compatible)

UK Power Cord

P/N: 3500637-0003

- Power Cord for AC/DC Adapter (UK plug compatible)

Spare Battery Pack

P/N: 3501192-0001

- Rechargeable Lithium-Ion
- 7.2 A, 6.7 Ah, 48.2 Wh

